

## Duct Medium ESP (50/96 Pa)

AD302MMERA



### FEATURES & BENEFITS

- Flexible duct connection for easier installation
- Built-in drain pump for better water drainage
- Built-in high efficiency filter, better air quality
- ESP 50/96Pa

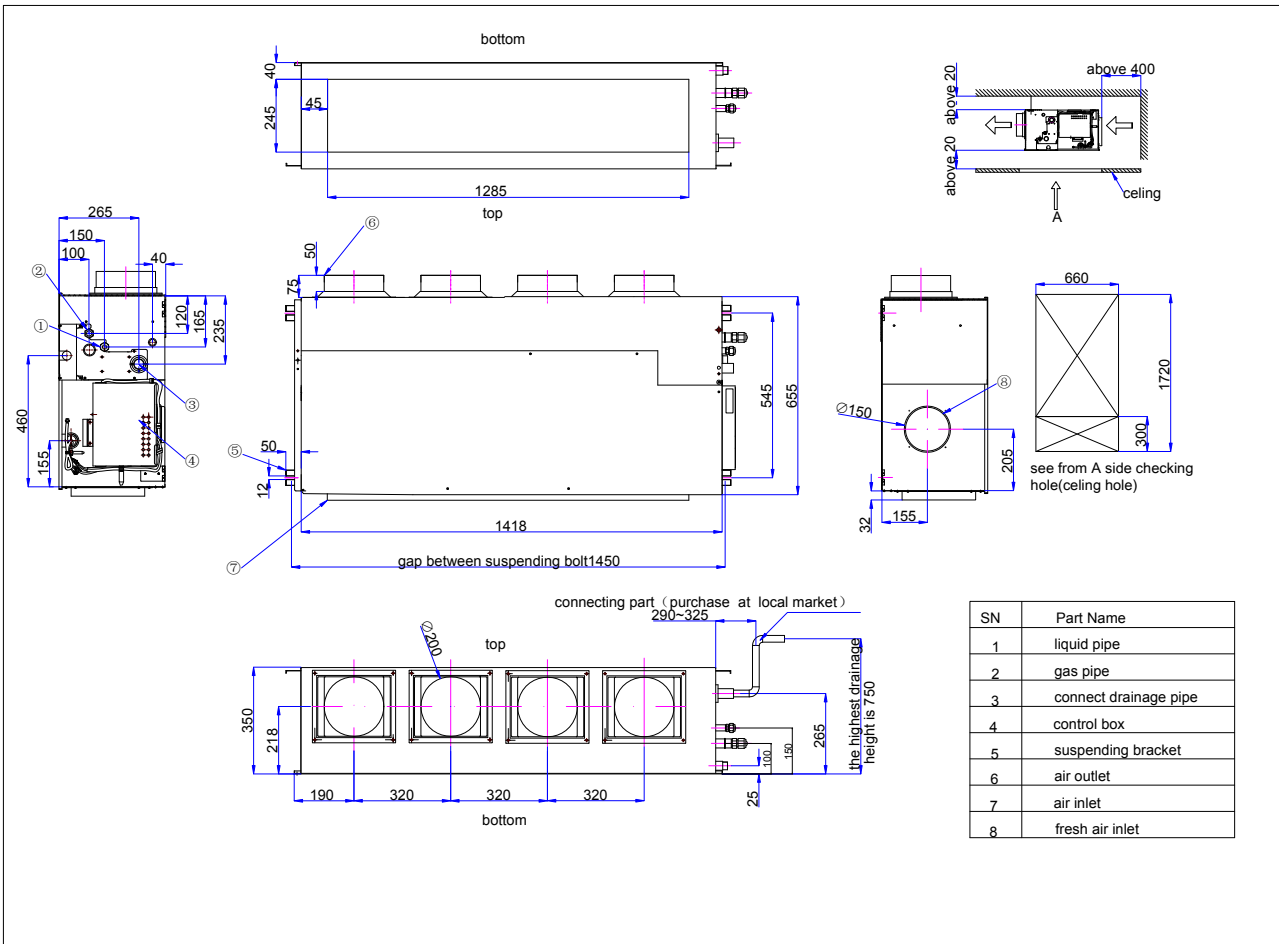
### PERFORMANCE

Indoor unit name:	Duct Medium ESP (50/96 Pa)	Rated heating capacity(kW):	10
Indoor unit model:	AD302MMERA	Heating input power(kW):	0.28
Type:	Duct	Rated cooling conditions:	Indoor(°C DB/WB):27/19 Ambient(°C DB/WB):35/24
Rated cooling capacity(kW):	9	Rated heating conditions:	Indoor(°C DB/WB):20/14.5 Ambient(°C DB/WB):7/6
Sensible capacity(kW):	6	Rated piping length (m):	
Cooling input power(kW):	0.28	Rated height separation(m):	

### INDOOR UNIT DETAILS

Power supply(V/Hz/Ph):	220-230/50/60/1	Airflow rate (H/M/L)(m <sup>3</sup> /h):	1900/1726/1538
Power supply connections:	L,N, Ground	Moisture removal(m <sup>3</sup> /h):	
Min. circuit Amps MCA (A):	1.81	Gas pipe connection(mm):	Φ15.88
Max. fuse Amps MFA (A):	5.8	Liquid pipe connection(mm):	Φ9.52
Dimensions(H×W×D)(mm):	350×1418×655	Condensate connection(mm):	Φ32
Panel(H×W×D)(mm):	/	Sound pressure(H/M/L)(dBA):	39/37/35
Net weight(kg):	59	Sound power level(H/M/L)(dBA):	52/50/48
Panel weight(kg):	/	Ext. static pressure (Rated/Max)(Pa):	50/96

### DIMENSIONAL DRAWING



SN	Part Name
1	liquid pipe
2	gas pipe
3	connect drainage pipe
4	control box
5	suspending bracket
6	air outlet
7	air inlet
8	fresh air inlet