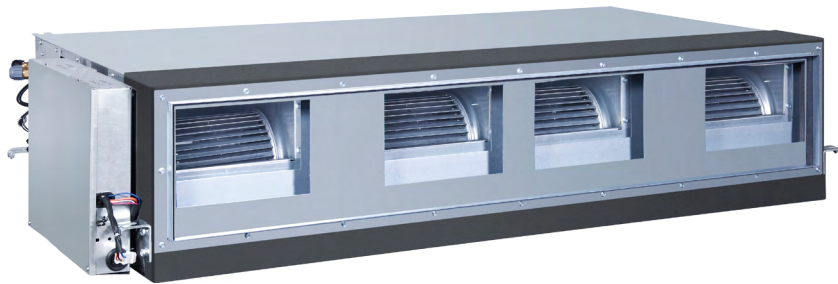


Duct High ESP (100/196 Pa)

AD962MHERA



FEATURES & BENEFITS

- Flexible duct connection for easier installation
- Wider capacity range from 18k to 96k
- Large air flow
- ESP 100/196Pa

PERFORMANCE

Indoor unit name:	Duct High ESP (100/196 Pa)	Rated heating capacity(kW):	31
Indoor unit model:	AD962MHERA	Heating input power(kW):	1.11
Type:	Duct	Rated cooling conditions:	Indoor(°C DB/WB):27/19 Ambient(°C DB/WB):35/24
Rated cooling capacity(kW):	28	Rated heating conditions:	Indoor(°C DB/WB):20/14.5 Ambient(°C DB/WB):7/6
Sensible capacity(kW):	19.7	Rated piping length (m):	
Cooling input power(kW):	1.11	Rated height separation(m):	

INDOOR UNIT DETAILS

Power supply(V/Hz/Ph):	220-230/50/60/1	Airflow rate (H/M/L)(m ³ /h):	4050/3255/2612
Power supply connections:	L,N, Ground	Moisture removal(m ³ /h):	
Min. circuit Amps MCA (A):	4.65	Gas pipe connection(mm):	Φ25.4
Max. fuse Amps MFA (A):	14.88	Liquid pipe connection(mm):	Φ9.52
Dimensions(H×W×D)(mm):	360×1725×876	Condensate connection(mm):	Φ32
Panel(H×W×D)(mm):	/	Sound pressure(H/M/L)(dBA):	54/51/49
Net weight(kg):	92	Sound power level(H/M/L)(dBA):	67/62/59
Panel weight(kg):	/	Ext. static pressure (Rated/Max)(Pa):	100/196

